

# Princeton University Art Museum

## Nature's Nation: American Art and Environment

---

Ansel Adams, American, 1902–1984

Published by Sierra Club, San Francisco

*Monolith, the Face of Half Dome*, 1927, printed 1960

Gelatin silver print

27.9 × 20.8 cm (11 × 8 3/16 in.)

Princeton University Art Museum, Gift of David H. McAlpin,  
Class of 1920

x1971-564



Ansel Adams, American, 1902–1984

Rock detail, ca. 1929–40

Gelatin silver print

34.5 × 24 cm (13 9/16 × 9 7/16 in.)

Princeton University Art Museum, Gift of David Hunter McAlpin  
Jr., Class of 1950

2006-509



Ansel Adams, American, 1902–1984

Jacob August Riis, American, 1849–1914

Richard Hoe Lawrence

Henry Granger Piffard, 1842–1910

*Bandits' Roost—A Mulberry Bend Alley*, ca. 1888; printed ca.  
1957

Gelatin silver print

45.7 × 35.6 cm (18 × 14 in.)

Museum of the City of New York. Gift of Mr. Ansel Adams, 1957.



Allora & Calzadilla, American and Cuban, working together from 1995

*Land Mark (Foot Prints)*, 2001–02

Chromogenic print from a digital file

46 x 60.5 cm. (18 1/8 x 23 13/16 in.)

Princeton University Art Museum, Museum purchase, Fowler McCormick, Class of 1921, Fund

2009-147 b



Allora & Calzadilla, American and Cuban, working together from 1995

*Land Mark (Foot Prints)*, 2001–02

Chromogenic print from a digital file

46 x 60.5 cm. (18 1/8 x 23 13/16 in.)

Princeton University Art Museum, Museum purchase, Fowler McCormick, Class of 1921, Fund

2009-147 d



Allora & Calzadilla, American and Cuban, working together from 1995

*Land Mark (Foot Prints)*, 2001–02

Chromogenic print from a digital file

46 x 60.5 cm. (18 1/8 x 23 13/16 in.)

Princeton University Art Museum, Museum purchase, Fowler McCormick, Class of 1921, Fund

2009-147 h



Angokwazuk (Happy Jack), Inupiaq, ca. 1870–1918

*Engraved walrus tusk*, 1900–04

Walrus ivory, graphite

71.8 x 8.9 x 5.7 cm (28 1/4 x 3 1/2 x 2 1/4 in.)

Thaw Collection of American Indian Art, Femimore Art Museum, Cooperstown, New York



Thomas Anshutz, American, 1851–1912

*The Ironworkers' Noontime*, 1880

Oil on canvas

43.2 × 60.6 cm (17 × 23 7/8 in.)

Fine Arts Museums of San Francisco. Gift of Mr. and Mrs. John D. Rockefeller 3rd



John James Audubon, American, 1785–1851

*Carolina Parrot*, published in *The Birds of America*, Vol. 1, Pl. 26., London: 1827–38

Hand-colored engraving and aquatint on Whatman wove paper by Robert Havell

Jr. 99 × 67 × 3.5 cm (39 × 26 3/8 × 1 3/8 in.)

sheet: 97 × 64 cm (38 3/16 × 25 3/16 in.)

plate: 83.5 × 59.6 cm (32 7/8 × 23 7/16 in.)

Princeton University Library, Rare Books and Special Collections



John James Audubon, American, 1785–1851

*Red-tailed Buzzard*, in *The Birds of America*, first octavo edition, vol. 1, pl. 7, New

York: 1840–44

Hand-colored lithograph

Princeton University Library, Rare Books and Special Collections



possibly Aymara

*Festival Hat*, 18th century

Repoussé silver plaques on velvet, glass beads, wire

12.5 × 33.7 × 33.7 cm (4 15/16 × 13 1/4 × 13 1/4 in.)

Brooklyn Museum, Museum Expedition 1941, Frank L. Babbott Fund 41.1275.274c



Subhankar Banerjee, Indian, active in United States, born 1967  
*Caribou Migration I*, from the series *Oil and the Caribou*, 2002  
Digital chromogenic print  
213.4 × 167.3 cm (84 × 65 7/8 in.)  
Collection Lannan Foundation



George Beaver, Chaticks si Chaticks, active late 19th century  
*Double-sided drum*, ca. 1890  
Rawhide, wood, iron nails, tacks, pigments  
8.9 × 45.7 cm (3 1/2 × 18 in.)  
Thaw Collection of American Indian Art, Femimore Art Museum, Cooperstown,  
New York



George Beck, English, active in the United States, 1748–1812  
*Georgetown and City of Washington*, ca. 1797  
Watercolor and gouache on paper  
38.1 × 50.8 cm (15 × 20 in.)  
Courtesy Arader Galleries



George Wesley Bellows, American, 1882–1925

*Cliff Dwellers*, 1913

Oil on canvas

102.1 × 106.8 cm (40 3/16 × 42 1/16 in.)

Los Angeles County Museum of Art, Los Angeles County Fund



Albert Bierstadt, American, 1830–1902

*Mount Adams, Washington*, 1875

Oil on canvas

138 x 213 cm. (54 5/16 x 83 7/8 in.)

Princeton University Art Museum, Gift of Mrs. Jacob N. Beam



Albert Bierstadt, American, 1830–1902

*Bridal Veil Falls, Yosemite*, ca. 1871–73

Oil on canvas

91.8 × 67 cm (36 1/8 × 26 3/8 in.)

North Carolina Museum of Art, Raleigh, Purchased with funds from the North Carolina State Art Society (Robert F. Phifer Bequest) and various donors, by exchange



Albert Bierstadt, American, 1830–1902

*The Last of the Buffalo*, 1891

Photogravure with applied watercolor

58.4 × 80 cm (23 × 31 1/2 in.)

Private Collection, Courtesy of Arader Galleries, Philadelphia



Peter Blake, American, 1920–2006

"Ideal Museum" for Jackson Pollock's Work, 1949

Reconstructed model by Patrick Bodden, 1994

model: 19.7 × 124.5 × 63.5 cm (7 3/4 × 49 × 25 in.)

Pollock-Krasner House and Study Center, East Hampton, NY



David Gilmour Blythe, American, 1815 - 1865

*Prospecting*, ca. 1864–65

Oil on canvas

31.1 × 22.9 cm (12 1/4 × 9 in.)

The Westmoreland Museum of American Art, Bequest of Richard M. Scaife, #2015.20



Engraver Louis Bouquet, French, 1765–1814

after a drawing by Lorenz Adolf Schönberger, German, 1768–1847, and Pierre Turpin French, 1775–1840, after a sketch by Alexander von Humboldt, German, 1769–1859

*Géographie des Plantes Équinoxiales. Tableau Physique des Andes et Pays Voisins*,

Paris: Chez Levrault, Schoelle et compagnie, 1805

Engraving with watercolor, pen and ink

37 × 78.9 cm (14 9/16 × 31 1/16 in.)

Missouri Botanical Garden, Peter H. Raven Library



Mathew Brady, American, 1823–1896

*Wounded Trees at Gettysburg*, from the series *The War for the Union*, ca. 1863

Albumen silver print

image: 7.9 × 7.9 cm (3 1/8 × 3 1/8 in.)

image: 7.9 × 8.1 cm (3 1/8 × 3 3/16 in.)

mount: 10.2 × 17.8 cm (4 × 7 in.)

George Eastman Museum, museum accession



Grafton Tyler Brown, American, 1841–1918

*View of the Lower Falls, Grand Canyon of the Yellowstone*, 1890

Oil on canvas

76.9 × 51.2 cm (30 1/4 × 20 3/16 in.)

Smithsonian American Art Museum, Museum purchase through the Luisita L. and Franz H. Denghausen Endowment and the Smithsonian Institution Collections Acquisition Program



Theodor de Bry, Flemish, 1528 - 1598

*Indian Miners at Potosí*, published in *Americae nona & postrema pars*, Frankfurt: 1602

Engraving

35.8 × 25 × 3.6 cm (14 1/8 × 9 13/16 × 1 7/16 in.)

Scheide Library, Princeton University Library, Rare Books and Special Collections



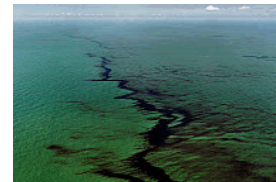
Edward Burtynsky, Canadian, born 1955

*Oil Spill #10, Oil Slick, Gulf of Mexico, June 24, 2010, 2010*

Chromogenic Colour print

99.1 × 132.1 cm (39 × 52 in.)

Courtesy Howard Greenberg Gallery



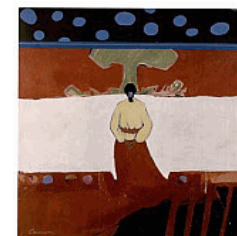
T.C. Cannon, Kiowa, 1946–1978

*Who Shot the Arrow ... ? Who Killed the Sparrow ... ?*, 1970

Acrylic on paper on canvas

101.6 × 91.4 cm (40 × 36 in.)

U.S. Department of the Interior, Indian Arts and Crafts Board, Southern Plains Indian Museum and Craft Center



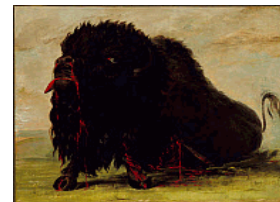
Thomas Cartwright,  
 after George Beck, English, active in the United States, 1748–1812  
*Georgetown and Federal City, or City of Washington, 1800*  
 Etching, aquatint  
 image: 41.8 × 57.8 cm (16 7/16 × 22 3/4 in.)  
 sheet: 45.8 × 60.9 cm (18 1/16 × 24 in.)  
 Gift of I.N. Phelps Stokes, Print Collection, Miriam and Ira D. Wallach Division of Art,  
 Prints and Photographs, The New York Public Library, Astor, Lenox and Tilden  
 Foundations



Mark Catesby, British, ca. 1682 - 1749  
*The Parrot of Carolina, in The Natural History of Carolina, Florida and the Bahama  
 Islands [ . . . ] vol. 1, pl. 11, London: 1731*  
 Hand-colored etching  
 plate: 26.2 × 35 cm (10 5/16 × 13 3/4 in.)  
 sheet: 36.5 × 52.1 cm (14 3/8 × 20 1/2 in.)  
 Princeton University Library, Rare Books and Special Collections



George Catlin, American, 1796–1872  
*Dying Buffalo, Shot with an Arrow, 1832–33*  
 Oil on canvas  
 60.9 × 73.7 cm (24 × 29 in.)  
 Smithsonian American Art Museum, Gift of Mrs. Joseph Harrison, Jr.



Frederic Edwin Church, American, 1826–1900  
*Cayambe, 1858*  
 Oil on canvas  
 76.2 × 122.2 cm (30 × 48 1/8 in.)  
 New-York Historical Society, The Robert L. Stuart Collection, the gift of his widow  
 Mrs. Mary Stuart





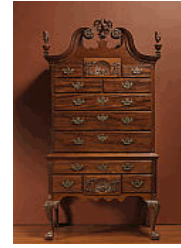
probably Henry Clifton, American, died 1771, and Thomas Carteret, American, active 1741–1771

*High chest of drawers, ca. 1760*

Mahogany, tulip, poplar, white cedar, and brass

238.5 x 109.5 x 60.5 cm. (93 7/8 x 43 1/8 x 23 13/16 in.)

Princeton University, Prospect House, Bequest of Mrs. Mary K. Wilson Henry PP690



Sue Coe, British, active in the United States, born 1951

*Boys Play Football with Hogs Head, At the Back of the Municipal Slaughter House, Liverpool. Nov. 1989, 1990*

Graphite, gouache, and watercolor on paper

76.2 x 101.6 cm (30 x 40 in.)

Galerie St. Etienne



Thomas Cole, American, 1801–1848

*Home in the Woods, 1847*

Oil on canvas

112.7 x 168 cm (44 3/8 x 66 1/8 in.)

Reynolda House Museum of American Art, Winston-Salem, NC, gift of Barbara B. Millhouse. Reynolda House is an Affiliate of Wake Forest University.



Thomas Cole, American, 1801–1848

*A View of the Mountain Pass Called the Notch of the White Mountains (Crawford Notch), 1839*

Oil on canvas

102 x 155.8 cm (40 3/16 x 61 5/16 in.)

National Gallery of Art, Washington, Andrew W. Mellon Fund, 1967.8.1



Thomas Cole, American, 1801–1848

*A Snow Squall*, 1825

Oil on canvas

79.4 × 104.5 cm (31 1/4 × 41 1/8 in.)

The R.W. Norton Art Gallery, Shreveport, Louisiana



Ralston Crawford, American, born Canada, 1906–1978

*Bikini, Tour of Inspection*, 1946

Oil on canvas

61 × 86.4 cm (24 × 34 in.)

The Vilcek Foundation



Estudio Teddy Cruz + Fonna Forman, established 2011

*The Cross-Border Environmental Commons: From the Global Border to the Border Neighborhood*, 2018

Digital video

Estudio Teddy Cruz + Fonna Forman



Diego de Valadés (Didacus Valades), Spanish, 1533–1582

*Illustration of the Great Chain of Being, in Rhetorica Christiana*, Perugia: 1579

Engraving

23 × 17.5 × 3.5 cm (9 1/16 × 6 7/8 × 1 3/8 in.)

Princeton University Library, Rare Books and Special Collections



Diller Scofidio + Renfro, founded 1981. Mark Hansen, Laura Kurgan and Ben Rubin, in collaboration with Robert Gerard Pietrusko and Stewart Smith

*EXIT*, 2008-15

Immersive video and audio installation based on an idea by Paul Virilio  
Single-channel video, 22 minutes

Commissioned by the Fondation Cartier pour l'art contemporain, Paris



Mark Dion, American, born 1961

*Scala Naturae*, 1994

Red and blue pencil on paper

frame: 42.9 × 35.2 × 2.9 cm (16 7/8 × 13 7/8 × 1 1/8 in.)

Private Collection



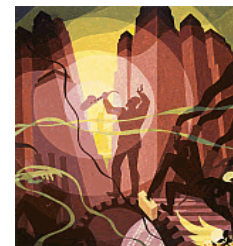
Aaron Douglas, American, 1899–1979

*Song of the Towers*, 1966

Oil and tempera on canvas

76.2 × 63.5 cm (30 × 25 in.)

Milwaukee Art Museum, Lent by State of Wisconsin, Executive Residence, Madison, WI. L1.2006



Robert S. Duncanson, American, 1821–1872

*Untitled (Landscape)*, late 1850s

Oil on canvas

61 × 91 cm. (24 × 36 in.)

frame: 92.3 × 120.5 × 7.5 cm. (36 5/16 × 47 7/16 × 2 15/16 in.)

Princeton University Art Museum, Museum purchase, Kathleen Compton Sherrerd Fund for Acquisitions in American Art and Mary Trumbull Adams Art Fund  
2011-107



Asher Brown Durand, American, 1796–1886

*Landscape*, 1859

Oil on canvas

77 x 61.5 cm (30 5/16 x 24 3/16 in.)

Princeton University Art Museum, Gift of J. O. MacIntosh, Class of 1902  
y1955-3249



Thomas Eakins, American, 1844–1916

*Rail Shooting on the Delaware*, 1876

Oil on canvas

56.2 x 76.8 cm (22 1/8 x 30 1/4 in.)

Yale University Art Gallery, Bequest of Stephen Carlton Clark, B.A. 1903



Ralph Earl, American, 1751–1801

*Esther Boardman*, 1789

Oil on canvas

108 x 81.3 cm (42 1/2 x 32 in.)

Lent by The Metropolitan Museum of Art, Gift of Edith and Henry Noss, 1991 (1991.3  
38)



Walton Ford, American, born 1960

*Dying Words*, 2005

6 copper plates, hardground etching, aquatint, spit bite aquatint, drypoint, scraping  
and burnishing on white Rives paper

34.9 x 45.4 cm (13 3/4 x 17 7/8 in.)

sheet: 57.1 x 76.2 cm (22 1/2 x 30 in.)

Courtesy of the Artist and Kasmin



John Gast, American, born in Germany, 1842–1896

*American Progress*, 1872

Oil on canvas

29.2 × 40 cm (11 1/2 × 15 3/4 in.)

Autry Museum of the American West, Los Angeles



Theaster Gates, American, born 1973

*Mantle with Hose III*, 2011

Wood, fire hose, glass

73.7 × 94 × 14 cm (29 × 37 × 5 1/2 in.)

Kolodny Family Collection



Sanford Robinson Gifford, American, 1823–1880

*Hunter Mountain, Twilight*, 1866

Oil on canvas

Overall: 30 5/8 x 54 1/8 in. (77.8 x 137.5cm)

Terra Foundation for American Art, Daniel J. Terra Collection, 1999.57



James Hamilton, American, born Ireland, 1819–1878

*Burning Oil Well at Night, near Rouseville, Pennsylvania*, ca. 1861 Oil

on paperboard

55.9 × 40.9 cm (22 × 16 1/8 in.)

Smithsonian American Art Museum, Museum purchase



Martin Johnson Heade, American, 1819–1904  
*Newburyport Marshes, Approaching Storm*, ca. 1871

Oil on canvas

38.7 × 76.5 cm (15 1/4 × 30 1/8 in.)

Terra Foundation for American Art, Daniel J. Terra Collection, 1999.68



Martin Johnson Heade, American, 1819–1904

*Gremlin in the Studio II*, ca. 1871–75

Oil on canvas

25.7 × 36.2 cm (10 1/8 × 14 1/4 in.)

Wadsworth Atheneum Museum of Art, Hartford, CT. The Dorothy Clark Archibald and Thomas L. Archibald Fund



Valerie Hegarty, American, born 1967

*Fallen Bierstadt*, 2007

Foamcore, paint, paper, glue, gel medium, canvas, wire, wood

177.8 × 127 × 42.5 cm (70 × 50 × 16 3/4 in.)

Floor element: 7.6 × 100.3 × 25.4 cm (3 × 39 1/2 × 10 in.)

Brooklyn Museum, Gift of Campari, USA 2008.9a-bv



Historic

Iñupiaq

*Bow drill*, early 19th century

Ivory and dark pigment

l. 44.8 cm., w. 1.8 cm., d. 1.0 cm. (17 5/8 × 11/16 × 3/8 in.)

Princeton University Art Museum, Bequest of John B.

Elliott, Class of 1951

1998-491



Alexandre Hogue, American, 1898 - 1994

*Crucified Land*, 1939

Oil on canvas

106 × 152.1 cm (41 3/4 × 59 7/8 in.)

Gift of Thomas Gilcrease Foundation, 1955, Gilcrease Museum, Tulsa Oklahoma



Winslow Homer, American, 1836–1910

*A Huntsman and Dogs*, 1891

Oil on canvas

71.4 × 121.9 cm (28 1/8 × 48 in.)

Philadelphia Museum of Art: The William L. Elkins Collection, 1924



Winslow Homer, American, 1836–1910

*Prisoners from the Front*, 1866

Oil on canvas

61 × 96.5 cm (24 × 38 in.)

Lent by The Metropolitan Museum of Art, Gift of Mrs. Frank B. Porter, 1922 (22.207)



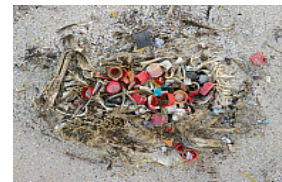
Chris Jordan, American, born 1963

*CF000668*, from the series *Midway: Message from the Gyre*, 2009

Ultrachrome inkjet print

sheet: 66 × 78.7 cm (26 × 31 in.)

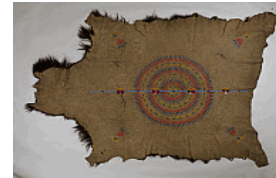
Collection of the Nevada Museum of Art, Gift of the artist



Justus Engelhardt Kühn, American, born German, died 1717  
*Eleanor Darnall*, ca. 1710  
Oil on canvas  
137.8 × 111.8 cm (54 1/4 × 44 in.)  
Maryland Historical Society, Bequest of Miss Ellen C. Daingerfield



Lakota  
*Buffalo Robe*, 1882  
Buffalo hide, sinew, beads, quills, pigments  
182.9 × 248.9 cm (72 × 98 in.)  
Loaned by the University of Pennsylvania Museum of Archaeology and Anthropology, Philadelphia, PA



Fitz Henry Lane, American, 1804–1865  
*Ship in Fog, Gloucester Harbor*, ca. 1860  
Oil on canvas  
61 × 99.1 cm (24 × 39 in.)  
Princeton University Art Museum, Museum purchase made possible by the Fowler McCormick, Class of 1921, Fund; the Kathleen C. Sherrerd Program Fund for American Art; and Celia A. Felsher, Class of 1976, and John L. Cecil, Class of 1976 2017-10



Dorothea Lange, American, 1895–1965  
*Ex-Tenant Farmer on Relief Grant in the Imperial Valley, California*, March 1937  
Gelatin silver print  
41.5 × 33.8 cm (16 5/16 × 13 5/16 in.)  
Princeton University Art Museum, Bequest of Minor White, by exchange 2007-155





Dorothea Lange, American, 1895–1965

*Tractored Out, Childress County, Texas, 1938*

Gelatin silver print

image: 24.7 × 33.7 cm (9 3/4 × 13 1/4 in.)

George Eastman Musuem, Museum accession by exchange



Hughie Lee-Smith, American, 1915 - 1999

*Slum Lad, ca. 1960*

Oil on canvas

66 × 81.3 cm (26 × 32 in.)

Collection of the Flint Institute of Arts, Flint, Michigan; Courtesy of the Isabel Foundation, L2003.80

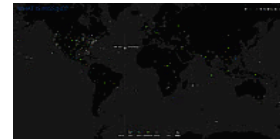


Maya Lin, American, born 1959

*What is Missing?, 2009-present*

Website ([whatismissing.net](http://whatismissing.net)) and multimedia installations

Courtesy of artist



Morris Louis, American, 1912–1962

*Intrigue, 1954*

Acrylic resin (Magna) on canvas

198 × 267 cm (77 15/16 × 105 1/8 in.)

Princeton University Art Museum, Gift of Sylvia and Joseph Slifka in honor of Frederick R. and Jan Perry Mayer

2004-51



Dat So La Lee (Louisa Keyser), Washoe, 1835–1925

*Basketry Vessel*, 1900

Willow, bracken fern, red bud

20.3 × 26.7 × 26.7 cm (8 × 10 1/2 × 10 1/2 in.)

Brooklyn Museum, By exchange 72.5.2



Joseph Lownes, American, 1758–1820

*Sugar Urn and Cover*, ca. 1800

Silver

22 × 11.7 × 11.7 cm (8 11/16 × 4 5/8 × 4 5/8 in.)

Princeton University Art Museum, Gift of Mr. and Mrs. Landon K.

Thorne for the Boudinot Collection

y1954-212 a-b



Cannupa Hanska Luger, Mandan/Hidatsa/Arikara/Lakota, born 1979

*Mirror Shields*, 2016

Masonite board, mylar adhesive paper, and rope

each: 121.9 × 40.6 cm (48 × 16 in.)

Collection of the Artist



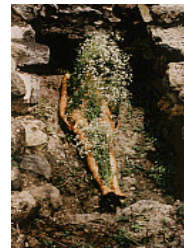
Homer Dodge Martin, American, 1836–1897  
*The Iron Mine, Port Henry, New York*, ca. 1862  
Oil on canvas  
76.5 × 127 cm (30 1/8 × 50 in.)  
Smithsonian American Art Museum, Gift of William T. Evans



Jervis McEntee, American, 1828–1891  
*View in Central Park, N.Y.C.*, 1858  
Oil on canvas  
34.3 × 60.3 cm (13 1/2 × 23 3/4 in.)  
New-York Historical Society, Gift of Mrs. Lyda M. Nelson



Ana Mendieta, American, born Cuba, 1948–1985  
*Untitled: Silueta Series, Mexico, from Silueta Works in Mexico, 1973-77, 1973*,  
estate print 1991  
Estate color photograph  
50.8 × 40.6 cm (20 × 16 in.)  
Courtesy The Estate of Ana Mendieta Collection, LLC, and courtesy Galerie Lelong  
& Co.



Alan Michelson, Mohawk, born 1953  
*Home in the Wilderness*, 2012  
Handmade paper, archival ink, and archival board  
31.7 × 62.9 × 27.9 cm (12 1/2 × 24 3/4 × 11 in.)  
Collection of the Artist



Richard Misrach, American, born 1949

*Swamp and Pipeline, Geismar, Louisiana, from the series Cancer Alley*, 1998, printed 2017

Pigmented inkjet print

50.8 × 61 cm (20 × 24 in.)

Collection of the artist, Courtesy of Fraenkel Gallery, San Francisco, Pace/MacGill Gallery, New York, and Marc Selwyn Fine Arts, Los Angeles



Kent Monkman, Cree, born 1965

*The Fourth World*, 2012

Acrylic paint on canvas

151.1 × 120.6 cm (59 1/2 × 47 1/2 in.)

frame: 174 × 142.2 × 11.4 cm (68 1/2 × 56 × 4 1/2 in.)

Lent by Denver Art Museum. Collection of Vicki and Kent Logan.



Thomas Moran, American, 1837–1926

*Lower Falls, Yellowstone Park*, 1893

Oil on canvas

100.6 × 150.5 cm (39 5/8 × 59 1/4 in.)

Gift of Thomas Gilcrease Foundation, 1955, Gilcrease Museum, Tulsa Oklahoma



Karl L.H. Müller, American, born Germany, 1820–1887

Manufactory: Union Porcelain Works, Brooklyn, NY, 1863–ca. 1922

*Century Vase*, 1876

Porcelain with paint and gilt decoration

55.2 × 43.2 × 30.5 cm (21 3/4 × 17 × 12 in.)

Smithsonian's National Museum of American History



Patrick Nagatani, American, 1945–2017

*Golden Eagle, United Nuclear Corporation Uranium Mill and Tailings, Churchrock, New Mexico*, 1990

Dye destruction print

image: 43.3 × 56.1 cm (17 1/16 × 22 1/16 in.)

sheet: 50.8 × 61 cm (20 × 24 in.)

Princeton University Art Museum, Gift of Dr. Donald Lappé, Class of 1968, and Mrs. Alice Lappé

2001-231



Isamu Noguchi, American, 1904–1988

*This Tortured Earth*, 1942-43, cast 1963

Bronze

7.6 × 71.4 × 73.7 cm, 54.9 lb. (3 × 28 1/8 × 29 in.)

The Isamu Noguchi Foundation and Garden Museum, New York



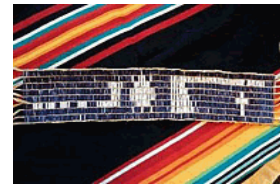
J.R. Norwood "Kelekpethakomaxkw" (Smiling-ThunderBear), Nanticoke-Lenape  
Indigenous American, born 1964

*Mathakawenanak Scheyichbink (We Fight Them in New Jersey)*, 2013

Replica wampum, simulated sinew

8.9 × 58.4 cm (3 1/2 × 23 in.) including fringe

Private Collection



Georgia O'Keeffe, American, 1887–1986

*The Lawrence Tree*, 1929

Oil on canvas

78.7 × 101.6 cm (31 × 40 in.)

Wadsworth Atheneum Museum of Art, Hartford, CT. The Ella Gallup Sumner and Mary Catlin Sumner Collection Fund



Frederick Law Olmsted, American, 1822–1903

Calvert Vaux, American, 1824-1895

*Greensward Plan for Central Park*, 1858

Ink on paper

109.2 × 335.3 cm (43 × 132 in.)

New York City Department of Records and Information Services, Municipal Archives



Charles Willson Peale, American, 1741–1827

*The Artist in His Museum*, 1822

Oil on canvas

263.5 × 202.9 cm (103 3/4 × 79 7/8 in.)

Pennsylvania Academy of the Fine Arts. Gift of Mrs. Sarah Harrison (The Joseph Harrison, Jr. Collection), 1878.1.2



Charles Willson Peale, American, 1741–1827

*George Washington at the Battle of Princeton*, 1783–84

Oil on canvas

237 x 145 cm. (93 5/16 x 57 1/16 in.)

Princeton University, commissioned by the Trustees.

PP222



Raphaelle Peale, American, 1774–1825

*Still Life with Steak*, 1816-17

Oil on wood panel

34 × 49.5 cm (13 3/8 × 19 1/2 in.)

Munson-Williams-Proctor Arts Institute, Utica, NY



Jackson Pollock, American, 1912–1956

*Number 4*, 1949

Oil, enamel and aluminum paint with pebbles on cut canvas, on composition board  
90.2 × 87.3 cm (35 1/2 × 34 3/8 in.)

Yale University Art Gallery, Katharine Ordway Collection



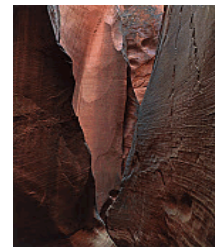
Eliot Furness Porter, American, 1901–1990

*Dungeon Canyon, Glen Canyon, Utah, August 29, 1961*, printed 1980

Dye transfer print

40.6 × 31.3 cm (16 × 12 5/16 in.)

Princeton University Art Museum, Gift of David H. McAlpin, Class of 1920  
x1982-21.10



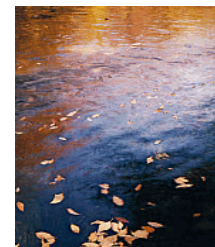
Eliot Furness Porter, American, 1901–1990

*Pool in a Brook, Pond Brook, New Hampshire, October 4, 1953*, printed 1984

Dye transfer print

27.2 × 21.2 cm (10 11/16 × 8 3/8 in.)

Princeton University Art Museum, Gift of the artist  
x1984-232

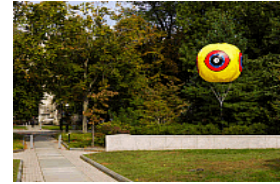


Postcommodity

N13: 31°20'50.88"N; 109°29'47.62"W, 2015

PVC sphere and para-cord  
diam. 304.8 cm (10 feet)

Princeton University Art Museum, Museum purchase, Sarah Lee Elson, Class of 1984,  
Fund for the International Artist-in-Residence Program at the Princeton University  
Art Museum  
2018-3



Robert Rauschenberg, American, 1925–2008

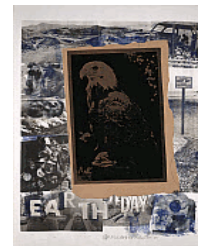
Printed at and published by Gemini G.E.L.

*Earth Day*, 1970

Color lithograph with collage

132 x 95 cm. (51 15/16 x 37 3/8 in.)

Princeton University Art Museum, Gift of the Friends of the Princeton University Art  
Museum  
x1971-21



Jacob August Riis, American, 1849–1914

*Bandits' Roost ca. 1888*, in *How the Other Half Lives: Studies among the Tenements of  
New York*, New York: Charles Scribner's Sons, 1890

20.6 x 15 x 3.6 cm (8 1/8 x 5 7/8 x 1 7/16 in.)

Princeton University Library, Rare Books and Special Collections





Jacob August Riis, American, 1849–1914

*An Italian Home under a Dump [In Sleeping Quarters—Rivington Street Dump]*,  
ca. 1890

Reproduction transparency (after gelatin silver transparency)

12.7 × 10.2 cm (5 × 4 in.)

Museum of the City of New York. 90.13.2.106



Alexis Rockman, American, born 1962

*Aviary*, 1992

Oil on wood

203.2 × 172.7 cm (80 × 68 in.)

Private Collection



Randolph Rogers, American, 1825–1892

*Ruth Gleaning*, first modeled 1850

Marble

91.4 × 50.8 × 50.8 cm (36 × 20 × 20 in.)

base: 11.4 × 43.2 × 43.2 cm (4 1/2 × 17 × 17 in.)

Private Collection, Delaware



Edward Savage, American, 1761 - 1817

*The Washington Family, 1798*

Oil on mahogany

46 × 61.3 cm (18 1/8 × 24 1/8 in.)

Winterthur Museum, Bequest of Henry Francis du Pont



John Smibert, American, 1688–1751

*Portrait of Mrs. Hugh Hall, 1733*

Oil on canvas

124.5 × 99.1 cm (49 × 39 in.)

Lent by Denver Art Museum. Funds from 1983 Collectors' Choice Benefit, Acquisition Challenge Grant, Mabel Y. Hughes Charitable Trust, Volunteer Endowment, Mr. and Mrs. Paul Atchison, Mr. and Mrs. Bruce Benson, Mr. and Mrs. William C. Foxley, Mr. and Mrs. Charles Haines Jr., Mr. and Mrs. William R. James, Mr. and Mrs. Frederick R. Mayer, Mr. and Mrs. Robert Petteys, Mr. and Mrs. Walter S. Rosenberry III, Mr. and Mrs. Keith Singer, and anonymous donors.



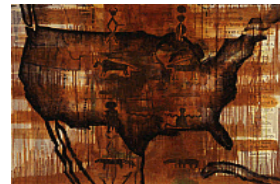
Jaune Quick-to-See Smith, Salish member, Confederated Salish and Kootenai Nation, born 1940

*The Browning of America, 2000*

Oil and mixed media on canvas

91.4 × 121.9 cm (36 × 48 in.)

Crocker Art Museum Purchase with contributions from Gail and John Enns and the George and Bea Gibson Fund 2007.23



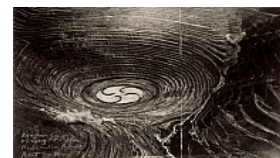
Robert Smithson, American, 1938–1973

*Bingham Copper Mining Pit, Utah Reclamation Project, 1973*

Wax pencil and tape on plastic overlay on photograph

50.8 × 76.2 cm (20 × 30 in.)

Seibert Family Collection



Tlingit artist

*Naaxein (Chilkat Robe)*, early 19th century

Mountain goat wool, cedar bark, leather

134.6 × 161.9 cm (53 × 63 3/4 in.)

Peabody Essex Museum, Salem, Massachusetts. Gift of Captain Robert Bennet Forbes, 1832



Mierle Laderman Ukeles, American, born 1939

*"May 15, 1980, Sweep 10, Queens 14,"* image from *Touch Sanitation Performance*.

*Citywide performance with 8,500 sanitation workers across all fifty-nine New York City Sanitation districts. Photograph by Vincent Russo, July 24, 1979–June 26, 1980, printed 2007*

Color photograph

image: 40.6 × 61 cm (16 × 24 in.)

Private Collection, Ronald Feldman Fine Arts, New York



Unknown

*Men Standing with Pile of Buffalo Skulls, Michigan Carbon Works, 1892* Photographic print on mat board

19 × 24.1 cm (7 1/2 × 9 1/2 in.)

Detroit Public Library - Burton Historical Collection

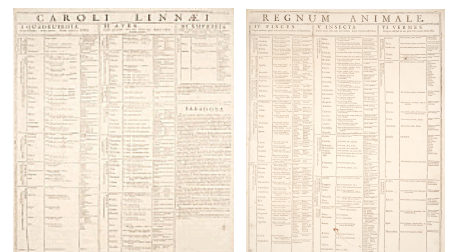


Carl von Linné (Carolus Linnaeus), Swedish, 1707–1778

*Systema Naturae...* (*A general system of nature, through the three grand kingdoms of animals, vegetables, and minerals*), first edition, Leiden: The Netherlands, 1735 bound volume

56 × 43 × 1.3 cm (22 1/16 × 16 15/16 × 1/2 in.)

Missouri Botanical Garden, Peter H. Raven Library



Robert Walter Weir, American, 1803–1889

*The Greenwich Boat Club*, 1833

Oil on canvas

54 x 77.5 cm. (21 1/4 x 30 1/2 in.)

Princeton University Art Museum, Museum purchase, Fowler McCormick, Class of 1921, Fund and the Kathleen Compton Sherrerd Fund for Acquisitions in American Art; frame gift of Eli Wilner & Company  
2009-1



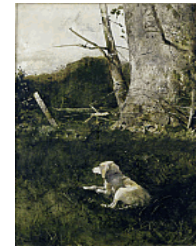
Andrew Wyeth, American, 1917– 2009

*My Hound*, 1962

Watercolor and drybrush on paper

58.7 x 41.6 cm (23 1/8 x 16 3/8 in.)

Private Collection



Newell Convers Wyeth, American, 1882–1945

*Roping Horses in the Corral*, 1904

Oil on canvas

55.9 x 81.3 cm (22 x 32 in.)

Private Collection



Jamie Wyeth, American, born 1946

*Portrait of Lady, Study #1*, 1968

Watercolor and pencil on paper

35.6 x 55.9 cm (14 x 22 in.)

Private Collection

